

Getting involved

We are inviting people and organisations interested in supporting the development of ***In the Image*** and who may wish to become involved in any way to make contact with us so that we may register your interest.

Here are some of the ways you or your organisation might participate:

- Hear artists featured in the collection talk about their work
- Learn about the history of art and the significance of the collection to it
- Learn ways of appreciating and reflecting on art
- Share your response to the works and hear from others
- Learn about how pieces are acquired for the collection
- Make an artistic response to a piece (e.g. visual art or creative writing)
- Help with practical tasks:
 - painting and setting up display boards
 - mounting works and taking them down at the close;
 - publicity, contacts and group bookings;
 - stewarding;
 - assisting with related projects and workshops

It may be that ***In the Image*** sparks for you an exciting idea for a project or event - in which case we would love to hear from you!

Please let us know how you or your organisation would like to participate.

Your ***In the Image*** contact person in the first instance is:

Name:	<input type="text"/>
Telephone:	<input type="text"/>
Email:	<input type="text"/>

Please also feel free to contact:

Andrew Herbert
Mission Development Officer
The Wesley Church Centre
St. John Street
CHESTER
CH1 1DA

T: 01244 323037 E: andrew@wesleychester.co.uk

in the image



An exhibition of pieces from
The Methodist Art Collection
The Wesley Church Centre
St. John Street
CHESTER CH1 1DA

22nd September - 28th October 2012
Monday to Saturday, 10am-4pm

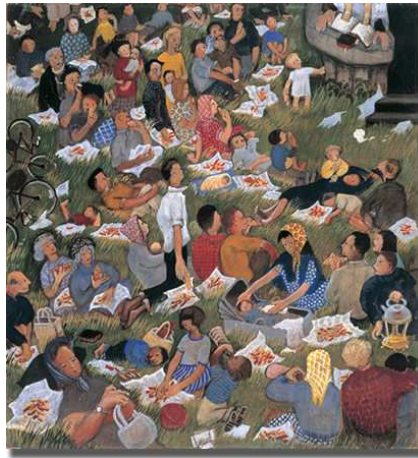
For event
programme
including talks
and workshops visit
www.wesleychester.co.uk

The Wesley
Church Centre 

The collection

Containing over fifty pieces from the early twentieth century onwards, the Methodist Church's modern art collection focuses on the life of Christ in a variety of cultural contexts.

The works have been purchased or commissioned by the trustees to provide a source of high quality contemporary art which enables people to explore the Christian faith, its meanings and implications through imagery.



It has been said that the collection is widely regarded as “*the finest collection of Modern Christian art outside the Vatican*”.

Begun in the 1960s and originally displayed in one location, it has grown substantially and become available for exhibition in the UK. Works were shown at this year's Greenbelt festival and will also be exhibited at Methodist Central Hall during the 2012 London Olympics.

The collection includes pieces by well known names - Graham Sutherland, Edward Burra, Ceri Richards - as well as artists now recognised as playing a distinctive part in the development of art in the late twentieth century. Many are from the UK but the curators also seek to acquire the work of artists of other backgrounds.



Front cover: *The Dalit Madonna*
Jyoti Sahi (b.1944) Oil

Above: *The supper at Emmaus*
Roy de Maistre (1894-1968) Oil

Above right: *The five thousand*
Eulalia Clarke (1914-1970) Oil

Pieces range from life size figures down to small, almost postcard size pieces, and employ a variety of media – oils, watercolour, gouache and collage. Some are highly figurative, others much more abstract in character, but all challenge the viewer to reflection and meditation.



Rest on the flight into Egypt
Nicholas Mynheer (b.1958) Oil

None of the works is a ‘simple’ portrayal of a biblical scene. Each takes the viewer beyond the particular moment referred to, into other realms of thought, be it the inner world of the subject or the viewer, the politics, values and culture of the time or, perhaps, of today.

Our exhibition

Wesley's exhibition of pieces from the collection comes at the end of a year of celebrations to mark our 200th anniversary. The exhibition will be open every day between the dates shown on the front of this leaflet.

The pieces will be hung in the major spaces in the ground floor of the church complex to allow them to be seen by casual visitors, worshippers and regular users of the church centre alike. There will be no admission charge and repeat visits will be encouraged. All spaces are fully accessible.

Our creative programme

We want *In the Image* to be much more than an exhibition. Our vision is for a programme of workshops and events enabling people of all ages to explore and respond to the rich meaning and significance of the works.

Drawing on the resources of local individuals and organisations, we plan to run workshops covering a range of responses including creative writing, poetry, drama, music, sculpture and original art.

In addition to events at Wesley, we want to encourage other groups to run projects in their own venues inspired by the exhibition.

We are also considering establishing open commissions in one or more of the creative arts to encourage responses to the pieces through for example painting, poetry or prose.



The washing of the feet
Ghislaine Howard (b.1953) Acrylic